



ORIGINAL ARTICLE

Volume 329:977-986

September 30, 1993

Number 14

[Next](#) ▶

The Effect of Intensive Treatment of Diabetes on the Development and Progression of Long-Term Complications in Insulin-Dependent Diabetes Mellitus

The Diabetes Control and Complications Trial Research Group

ABSTRACT

Background Long-term microvascular and neurologic complications cause major morbidity and mortality in patients with insulin-dependent diabetes mellitus (IDDM). We examined whether intensive treatment with the goal of maintaining blood glucose concentrations close to the normal range could decrease the frequency and severity of these complications.

Methods A total of 1441 patients with IDDM -- 726 with no retinopathy at base line (the primary-prevention cohort) and 715 with mild retinopathy (the secondary-intervention cohort) were randomly assigned to intensive therapy administered either with an external insulin pump or by three or more daily insulin injections and guided by frequent blood glucose monitoring or to conventional therapy with one or two daily insulin injections. The patients were followed for a mean of 6.5 years, and the appearance and progression of retinopathy and other complications were assessed regularly.

Results In the primary-prevention cohort, intensive therapy reduced the adjusted mean risk for the development of retinopathy by 76 percent (95 percent confidence interval, 62 to 85 percent), as compared with conventional therapy. In the secondary-intervention cohort, intensive therapy slowed the progression of retinopathy by 54 percent (95 percent confidence interval, 39 to 66 percent) and reduced the development of proliferative or severe nonproliferative retinopathy by 47 percent (95 percent confidence interval, 14 to 67 percent). In the two cohorts combined, intensive therapy reduced the occurrence of microalbuminuria (urinary albumin excretion of ≥ 40 mg per 24 hours) by 39 percent (95 percent confidence interval, 21 to 52 percent), that of albuminuria (urinary albumin excretion of ≥ 300 mg per 24 hours) by 54 percent (95 percent confidence interval, 19 to 74 percent), and that of clinical neuropathy by 60 percent (95 percent confidence interval, 38 to 74 percent). The chief adverse event associated with intensive therapy was a two-to-threefold increase in severe hypoglycemia.

Conclusions Intensive therapy effectively delays the onset and slows the progression of diabetic retinopathy, nephropathy, and neuropathy in patients with IDDM.

Insulin-dependent diabetes mellitus (IDDM) is accompanied by long-term microvascular, neurologic, and macrovascular complications. Although the daily management of IDDM is burdensome and the specter of metabolic decompensation ever-present, long-term complications, including retinopathy, nephropathy, neuropathy, and cardiovascular disease, have caused the most morbidity and mortality since the introduction of insulin therapy^{1,2}. The prevention and amelioration of these complications have been major goals of recent research.

Although studies in animal models of diabetes^{3,4,5} and epidemiologic studies^{6,7,8} implicate hyperglycemia in the pathogenesis of long-term complications, previous clinical trials have not demonstrated a consistent or convincing beneficial effect of intensive therapy on them^{9,10,11}. A recent publication from the Stockholm

THIS ARTICLE

▶ Abstract

COMMENTARY

▶ Letters

▶ Letters

▶ Letters

TOOLS & SERVICES

▶ Add to Personal Archive

▶ Add to Citation Manager

▶ Notify a Friend

▶ E-mail When Cited

MORE INFORMATION

▶ PubMed Citation

Diabetes Intervention Study demonstrated a more uniform beneficial effect of intensive therapy in patients with established complications, despite the apparent crossover of most conventionally treated patients to intensive therapy during the trial¹².

The Diabetes Control and Complications Trial was a multicenter, randomized clinical trial designed to compare intensive with conventional diabetes therapy with regard to their effects on the development and progression of the early vascular and neurologic complications of IDDM^{13,14,15}. The intensive-therapy regimen was designed to achieve blood glucose values as close to the normal range as possible with three or more daily insulin injections or treatment with an insulin pump. Conventional therapy consisted of one or two insulin injections per day. Two cohorts of patients were studied in order to answer two different, but related, questions: Will intensive therapy prevent the development of diabetic retinopathy in patients with no retinopathy (primary prevention), and will intensive therapy affect the progression of early retinopathy (secondary intervention)? Although retinopathy was the principal study outcome, we also studied renal, neurologic, cardiovascular, and neuropsychological outcomes and the adverse effects of the two treatment regimens.

Methods

Study Design

The trial design and methods have been described elsewhere^{13,14,15,16,17,18,19,20,21,22,23,24,25}. Neither the investigators nor the patients were aware of the outcome data unless predetermined criteria, such as the development of severe retinopathy requiring laser therapy, were met. The physician and the patient were then made aware of the specific condition, and appropriate management was arranged.

A total of 1441 patients were recruited at 29 centers from 1983 through 1989¹⁵. In June 1993, after an average follow-up of 6.5 years (range, 3 to 9), the independent data monitoring committee¹⁶ determined that the study results warranted terminating the trial.

Eligibility Criteria and Base-Line Characteristics

The major criteria for eligibility included insulin dependence, as evidenced by deficient C-peptide secretion; an age of 13 to 39 years; and the absence of hypertension, hypercholesterolemia, and severe diabetic complications or medical conditions^{13,15,25}. To be eligible for the primary-prevention cohort, patients were required to have had IDDM for one to five years, to have no retinopathy as detected by seven-field stereoscopic fundus photography, and to have urinary albumin excretion of less than 40 mg per 24 hours. To be eligible for the secondary-intervention cohort, the patients were required to have had IDDM for 1 to 15 years, to have very-mild-to-moderate nonproliferative retinopathy,^{13,26} and to have urinary albumin excretion of less than 200 mg per 24 hours. A multicomponent process of informed consent was used to promote the patients' understanding of the study objectives and procedures, emphasizing the necessity of accepting random assignment to either intensive or conventional treatment¹⁷. Randomization was stratified according to the primary-prevention and secondary-intervention cohorts at each center²⁷. The base-line characteristics of the study cohorts are shown in [Table 1](#).

View this table: [Table 1](#). Base-Line Characteristics of the Two Study Cohorts.

[\[in this window\]](#)

[\[in a new window\]](#)

Treatment and Follow-up

Conventional therapy consisted of one or two daily injections of insulin, including mixed intermediate and rapid-acting insulins, daily self-monitoring of urine or blood glucose, and education about diet and exercise^{13,25}. Conventional therapy did not usually include daily adjustments in the insulin dosage. The goals of conventional therapy included the absence of symptoms attributable to glycosuria or hyperglycemia; the absence of ketonuria; the maintenance of normal growth, development, and ideal body weight; and freedom from severe or frequent hypoglycemia. Women who became pregnant or were planning a pregnancy received intensive therapy until the time of delivery, after which they resumed conventional treatment. Patients in the conventional-therapy group were examined every three months.

Intensive therapy included the administration of insulin three or more times daily by injection or an external pump. The dosage was adjusted according to the results of self-monitoring of blood glucose performed at least four times per day, dietary intake, and anticipated exercise. The goals of intensive therapy included preprandial blood glucose concentrations between 70 and 120 mg per deciliter (3.9 and 6.7 mmol per liter),

postprandial concentrations of less than 180 mg per deciliter (10 mmol per liter), a weekly 3-a.m. measurement greater than 65 mg per deciliter (3.6 mmol per liter), and hemoglobin A_{1c} (glycosylated hemoglobin), measured monthly, within the normal range (less than 6.05 percent). The patients initially chose either multiple injections or pump therapy and could subsequently change to the other method if their glycemic goals were not achieved or if such was their preference. The patients in the intensive-therapy group visited their study center each month and were contacted even more frequently by telephone to review and adjust their regimens.

Outcome Measures

Seven-field stereoscopic fundus photographs were taken by certified photographers every six months and were centrally assessed by graders unaware of the treatment-group assignments. The graders used the protocol of the Early Treatment Diabetic Retinopathy Study (ETDRS)²⁸. The overall levels of severity of retinopathy were determined for each patient according to the ETDRS interim scale,²⁶ in which a scale of 25 steps is used to represent the overall extent of retinopathy in both eyes. In the primary-prevention cohort, the development of clinically important retinopathy was defined as a change of at least three steps from base line that was sustained for at least six months. Similarly, a sustained three-step change was used to define progression of retinopathy in the secondary-intervention cohort. This definition was chosen because of its reproducibility and because it represented a measure of clinically important worsening. Proliferative retinopathy and severe nonproliferative retinopathy were chosen as additional outcomes, because they indicate the need for frequent follow-up and possibly photocoagulation²⁹. The measures of nephropathic, neuropathic, neuropsychological, macrovascular, and quality-of-life outcomes have been described in detail elsewhere^{13,18,19,20,21,22,23,24,25}.

Statistical Analysis

The Wilcoxon rank-sum test was used to compare the two treatment groups within each cohort with regard to ordinal and numerical variables, and the contingency chi-square test was used for comparisons of categorical variables³⁰. For a stratified analysis of proportions, the adjusted log relative risk comparing the results in the two treatment groups within each cohort was calculated by least-squares analysis³¹. Event rates are presented as the number of events per 100 patient-years based on the ratio of the observed number of events to the total number of patient-years of exposure. The life-table method was used to estimate the cumulative incidence of events,³² with adjustment for periodically timed assessments³³. The difference between cumulative incidence curves was tested by the Mantel (log-rank) test³². The average relative risks for the two treatment groups within each cohort over the entire observation period were estimated by proportional-hazards analysis,³² with stratification or adjustment of the model for base-line variables. The imbalance in the base-line distribution of categories of retinopathy ([Table 1](#)) was adjusted for in the estimates of the reduction in the risk of retinopathy in the secondary-intervention cohort. The adjusted percentages of reduction in risk with intensive therapy were calculated by subtracting the average adjusted relative risk of intensive as compared with conventional therapy from 1 and multiplying by 100. The relative risk in the combined cohort was estimated by stratification according to the primary and the secondary cohorts. In the case of recurrent events, the relative risk was computed as the ratio of the crude event rates. The variance of the event rate and of the log relative risk included an adjustment for overdispersion³⁴. A log-linear Poisson regression model was used to assess the relation between the risk of events and the time-dependent covariate measured periodically during the trial³⁴. The time-dependent covariate values were also grouped according to decile, and the crude rate of the event was computed within the categories of the covariate. All outcomes were analyzed on the basis of the original treatment assignments. All results nominally significant at $P < 0.05$ are indicated.

Results

Adherence and Metabolic Control

The entire cohort of 1441 patients was followed for a mean of 6.5 years (range, 3 to 9), a total of more than 9300 patient-years. Ninety-nine percent of the patients completed the study, and more than 95 percent of all scheduled examinations were completed. Eleven patients died, and 32 patients, 8 of whom were lost to follow-up, were assigned to inactive status for some time during the trial because of unavailability for study or the investigator's decision that continuation of their treatment would be hazardous. Overall, the average percentage of time spent receiving the assigned treatment was 97 percent. This includes 95 women assigned to conventional therapy who received intensive therapy during pregnancy or while planning a pregnancy.

The adherence to assigned treatment and the effectiveness of intensive therapy in lowering blood glucose concentrations are reflected in the substantial difference over time between the glycosylated hemoglobin

values of the intensive-therapy group and those of the conventional-therapy group ([Figure 1A](#)). Glycosylated hemoglobin reached a nadir at six months in the patients receiving intensive therapy. A statistically significant difference in the average glycosylated hemoglobin value was maintained after base line between the intensive-therapy and conventional-therapy groups in both cohorts ($P<0.001$). Although 44 percent of the patients receiving intensive therapy achieved the goal of a glycosylated hemoglobin value of 6.05 percent or less at least once during the study, less than 5 percent maintained an average value in this range. The blood glucose concentrations achieved with each treatment, as measured with quarterly seven-point capillary-blood glucose profiles, are shown in [Figure 1B](#). The mean (\pm SD) value for all glucose profiles in the intensive-therapy group was 155 ± 30 mg per deciliter (8.6 ± 1.7 mmol per liter), as compared with 231 ± 55 mg per deciliter (12.8 ± 3.1 mmol per liter) in the conventional-therapy group ($P<0.001$).

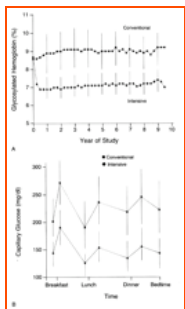


Figure 1. Measurements of Glycosylated Hemoglobin and Blood Glucose in Patients with IDDM Receiving Intensive or Conventional Therapy.

Panel A shows the medians of all quarterly glycosylated hemoglobin values, with the 25th and 75th percentiles of the yearly values indicated by the vertical lines. The differences between treatments were statistically significant ($P<0.001$) from three months until the end of the study. Panel B shows the medians of the quarterly mean values for the seven capillary-blood glucose measurements in a 24-hour period in each patient, with the 25th and 75th percentiles indicated by the vertical lines. The differences between treatments were statistically significant ($P<0.001$) at each of the seven testing times.

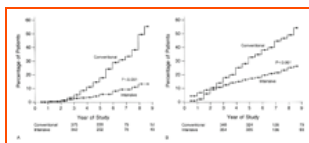
[View larger version](#)
(43K):

[\[in this window\]](#)
[\[in a new window\]](#)

Retinopathy

Primary-Prevention Cohort

The cumulative incidence of retinopathy, defined as a change of three steps or more on fundus photography that was sustained over a 6-month period, was similar in the two treatment groups until approximately 36 months, when the incidence curves began to separate ([Figure 2A](#)). From five years onward, the cumulative incidence of retinopathy in the intensive-therapy group was approximately 50 percent less than in the conventional-therapy group. During a mean of six years of follow-up, retinopathy as defined above developed in 23 patients in the intensive-therapy group and 91 patients in the conventional-therapy group. Intensive therapy reduced the adjusted mean risk of retinopathy by 76 percent (95 percent confidence interval, 62 to 85 percent) ([Table 2](#)). The reduction in risk increased with time. Too few patients in the primary-prevention cohort had proliferative or severe nonproliferative retinopathy (two in the intensive-therapy group and four in the conventional-therapy group) or clinically important macular edema (one and four, respectively), or required photocoagulation (three and two patients, respectively) for reliable conclusions to be drawn.



[View larger version](#) (18K):

[\[in this window\]](#)
[\[in a new window\]](#)

Figure 2. Cumulative Incidence of a Sustained Change in Retinopathy in Patients with IDDM Receiving Intensive or Conventional Therapy.

A sustained change in the severity of retinopathy was defined as a change observed by fundus photography of at least three steps from base line that was sustained for at least six months. In the primary-prevention cohort (Panel A), intensive therapy reduced the adjusted mean risk of the onset of retinopathy by 76 percent during the course of the study, as compared with conventional therapy ($P<0.001$). In the secondary-intervention cohort (Panel B), intensive therapy reduced the adjusted mean risk of progression of retinopathy by 54 percent as compared with conventional therapy ($P<0.001$). The numbers of patients in each therapy group who were evaluated at years 3, 5, 7, and 9 are shown below the graphs.

View this table: [Table 2.](#) Development and Progression of Long-Term Complications of Diabetes in the Study Cohorts and Reduction in Risk with Intensive as Compared with Conventional Therapy.

Secondary-intervention Cohort

The patients in the intensive-therapy group had a higher cumulative incidence of sustained progression of retinopathy by three steps or more during the first year than did those in the conventional-therapy group, but a lower cumulative incidence beginning at 36 months and continuing for the rest of the study ([Figure 2B](#)). Intensive therapy reduced the average risk of such progression by 54 percent (95 percent confidence interval, 39 to 66 percent) during the entire study period (77 patients in the intensive-therapy group and 143 patients in the conventional-therapy group). Intensive therapy reduced the adjusted risk of proliferative or severe nonproliferative retinopathy by 47 percent ($P = 0.011$) and that of treatment with photocoagulation by 56 percent ($P = 0.002$) ([Table 2](#)).

Consistency of Retinopathy Results

The cumulative incidence of sustained progression of retinopathy by three steps or more was analyzed within subgroups of patients to determine whether the reduction in risk with intensive therapy was consistent among subgroups. The subgroups were defined on the basis of base-line covariates, including age (adults vs. adolescents), sex, duration of IDDM, percentage of ideal body weight, level of retinopathy, mean blood pressure, presence of clinical neuropathy, screening glycosylated hemoglobin value, and albuminuria. A consistent reduction in the risk of retinopathy with intensive therapy was evident in all subgroups in both the primary-prevention and the secondary-intervention cohorts. The difference in retinal outcome between intensive and conventional therapy was also consistent among clinics.

Nephropathy

In both cohorts, microalbuminuria (defined as urinary albumin excretion, measured annually, of ≥ 40 mg per 24 hours) or albuminuria (urinary albumin excretion of ≥ 300 mg per 24 hours) developed in fewer patients in the intensive-therapy group than in the conventional-therapy group ([Figure 3](#)). Intensive therapy reduced the mean adjusted risk of microalbuminuria by 34 percent ($P = 0.04$) in the primary-prevention cohort and by 43 percent ($P = 0.001$) in the secondary-intervention cohort ([Table 2](#)). The risk of albuminuria was reduced by 56 percent ($P = 0.01$) in the secondary-intervention cohort. Advanced nephropathy, as defined by urinary albumin excretion of 300 mg or more per 24 hours and a rate of creatinine clearance below 70 ml per minute per 1.73 m² of body-surface area, developed in very few patients (two in the intensive-therapy group and five in the conventional-therapy group).

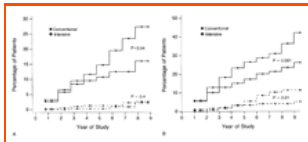


Figure 3. Cumulative Incidence of Urinary Albumin Excretion ≥ 300 mg per 24 Hours (Dashed Line) and ≥ 40 mg per 24 Hours (Solid Line) in Patients with IDDM Receiving Intensive or Conventional Therapy.

In the primary-prevention cohort (Panel A), intensive therapy reduced the adjusted mean risk of microalbuminuria by 34 percent ($P < 0.04$). In the secondary-intervention cohort (Panel B), patients with urinary albumin excretion of ≥ 40 mg per 24 hours at base line were excluded from the analysis of the development of microalbuminuria. Intensive therapy reduced the adjusted mean risk of albuminuria by 56 percent ($P = 0.01$) and the risk of microalbuminuria by 43 percent ($P = 0.001$), as compared with conventional therapy.

View larger version (18K):

[\[in this window\]](#)

[\[in a new window\]](#)

The cumulative incidence of microalbuminuria was analyzed among selected subgroups in the 1368 patients in both cohorts in whom urinary albumin excretion was less than 40 mg per 24 hours at base line. The effect of intensive treatment in reducing risk was maintained within the subgroups defined according to age, sex, duration of IDDM, mean blood pressure, base-line glycosylated hemoglobin value, dietary protein intake, and history of smoking.

Neuropathy

Clinical neuropathy was defined as an abnormal neurologic examination that was consistent with the presence of peripheral sensorimotor neuropathy plus either abnormal nerve conduction in at least two peripheral nerves or unequivocally abnormal autonomic-nerve testing^{9,10}. In the patients in the primary-prevention cohort who did not have neuropathy at base line, intensive therapy reduced the appearance of neuropathy at five years by 69 percent (to 3 percent, vs. 10 percent in the conventional-therapy group; $P = 0.006$) ([Table 2](#)). Similarly, in the secondary-intervention cohort, intensive therapy reduced the appearance of clinical neuropathy at five years by 57 percent (to 7 percent, vs. 16 percent; $P < 0.001$) ([Table 2](#)). All three components of the definition of clinical neuropathy were reduced similarly by intensive therapy ([Figure 4](#)).

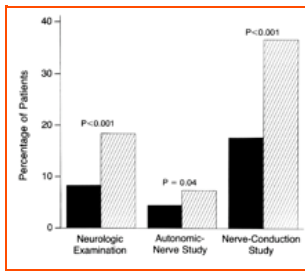


Figure 4. Prevalence of Abnormal Clinical Neurologic Examinations, Abnormal Results of Nerve-Conduction Studies, and Abnormal Autonomic-Nerve Studies at Five Years in Patients Receiving Intensive (Solid Bars) or Conventional (Hatched Bars) Therapy.

Abnormal results of nerve-conduction studies were defined as abnormal results of neurophysiologic tests in at least two peripheral nerves. The analysis included all patients from either cohort who did not have the abnormality in question at base line.

View larger version (34K):

[\[in this window\]](#)

[\[in a new window\]](#)

Macrovascular Disease

The relative youth of the patients made the detection of treatment-related differences in rates of macrovascular events unlikely. However, intensive therapy reduced the development of hypercholesterolemia, defined as a serum concentration of low-density lipoprotein cholesterol greater than 160 mg per deciliter (4.14 mmol per liter), by 34 percent (95 percent confidence interval, 7 to 54 percent) in the combined cohort ($P = 0.02$). When all major cardiovascular and peripheral vascular events were combined, intensive therapy reduced, albeit not significantly, the risk of macrovascular disease by 41 percent (to 0.5 event per 100 patient-years, vs. 0.8 event; 95 percent confidence interval, -10 to 68 percent).

Adverse Events and Safety

Mortality did not differ significantly between the treatment groups (seven deaths in the intensive-treatment group and four in the conventional-treatment group) and was less than expected on the basis of population-based mortality studies³⁵. As reported elsewhere,³⁶ the incidence of severe hypoglycemia, including multiple episodes in some patients, was approximately three times higher in the intensive-therapy group than in the conventional-therapy group ($P < 0.001$). In the intensive-therapy group, there were 62 hypoglycemic episodes per 100 patient-years in which assistance was required in the provision of treatment, as compared with 19 such episodes per 100 patient-years in the conventional-therapy group. This included 16 and 5 episodes of coma or seizure per 100 patient-years in the respective groups. There were no deaths, myocardial infarctions, or strokes definitely attributable to hypoglycemia, and no significant differences between groups with regard to the number of major accidents requiring hospitalization (20 in the intensive-therapy group and 22 in the conventional-therapy group). However, there were two fatal motor vehicle accidents, one in each group, in which hypoglycemia may have had a causative role. In addition, a person not involved in the trial was killed in a motor vehicle accident involving a car driven by a patient in the intensive-therapy group who was probably hypoglycemic. There were 54 hospitalizations, usually brief, to treat severe hypoglycemia in 40 patients in the intensive-therapy group, as compared with 36 hospitalizations in 27 patients in the conventional-therapy group, including 7 and 4 hospitalizations, respectively, to treat hypoglycemia-related injuries.

Despite the higher risk of severe hypoglycemia with intensive therapy, there was no difference between the two therapy groups in the occurrence of clinically important changes in neuropsychological function¹². In addition, there were no significant differences in the mean total scores on the trial's quality-of-life questionnaire,¹³ despite the added demands of intensive therapy. Weight gain was a problem with intensive therapy,³⁷ with an increase of 33 percent in the mean adjusted risk of becoming overweight, a condition defined as a body weight more than 120 percent above the ideal (12.7 cases of overweight per 100 patient-years in the intensive-therapy group vs. 9.3 in the conventional-therapy group). At five years, patients receiving intensive therapy had gained a mean of 4.6 kg more than patients receiving conventional therapy. The event rates for diabetic ketoacidosis were 1.8 and 2.0 episodes per 100 patient-years in the conventional-therapy and intensive-therapy groups, respectively ($P > 0.7$).

Discussion

Intensive therapy of patients with IDDM delays the onset and slows the progression of clinically important retinopathy, including vision-threatening lesions, nephropathy, and neuropathy, by a range of 35 to more than 70 percent. The large number of patients studied, the inclusion of a primary-prevention cohort, and the long follow-up period in this study provided the opportunity to demonstrate the effects of treatment in patients with a range of ages, durations of diabetes, degrees of severity of retinopathy, and base-line glycosylated hemoglobin values.

The most consistent finding in previous trials was transient worsening of retinopathy with intensive therapy,^{9,38,39} a result now confirmed by this trial. This early worsening, consisting of the development of soft exudates or intraretinal microvascular abnormalities, occurred mainly in the secondary-intervention cohort during the first year of therapy (22 percent of the patients in the intensive-therapy group and 13 percent of those in the conventional-therapy group). The abnormalities often disappeared by 18 months (Figure 2B). Early worsening should not deter clinicians from using intensive therapy, because the patients with early worsening who were so treated ultimately had a 74 percent reduction (95 percent confidence interval, 46 to 88 percent) in the risk of subsequent progression as compared with patients with early worsening who received conventional therapy ($P<0.001$).

Intensive insulin therapy reduced the risk of albuminuria and microalbuminuria by 54 percent and 39 percent, respectively, in the combined cohort. A reduction in the progression to albuminuria was suggested by a previous study of 36 patients with IDDM who had generally higher levels of urinary albumin excretion at base line than the patients in the present trial⁴⁰. Whether the decrease in the development of both microalbuminuria and albuminuria will result in a decrease in the development of renal insufficiency will be clarified by follow-up of the entire study cohort. The ability of intensive therapy to reduce the development of neuropathy suggests that neuropathy may be preventable. Finally, the tantalizing possibility that intensive therapy may reduce macrovascular disease requires further investigation.

In contrast to the clear-cut efficacy of intensive insulin therapy in reducing long-term complications, the risk of severe hypoglycemia was three times higher with such therapy. Relatively few patients required hospitalization or medical attention for hypoglycemia or resultant injuries, and serial neuropsychological testing showed no changes in cognitive function. Although we are mindful of the potential for severe injury, we believe that the risk of severe hypoglycemia with intensive therapy is greatly outweighed by the reduction in microvascular and neurologic complications.

Was the benefit of intensive therapy a result of the lowered glycemia, and can we choose a glycemic target that will preserve the benefits of intensive therapy but reduce the risk of severe hypoglycemia? We cannot answer these questions directly, because it was not practical to assign patients to multiple treatment groups with different levels of glycemia. Nevertheless, because of the clinical importance of the question, we analyzed the relation between the rate of development of retinopathy and glycemic exposure, expressed as the glycosylated hemoglobin value over time. These secondary analyses showed a continuously increasing risk of sustained progression by three steps with increasing mean glycosylated hemoglobin values (Figure 5A), even after adjustment for temporal effects and potential confounding factors. Similarly, the risk of severe hypoglycemia increased continuously with lower monthly glycosylated hemoglobin values (Figure 5B). These secondary analyses do not support the existence of a specific target value for glycosylated hemoglobin at which the benefits of intensive therapy are maximized and the risks minimized.

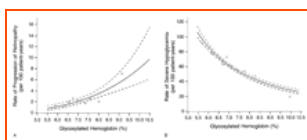


Figure 5. Risk of Sustained Progression of Retinopathy (Panel A) and Rate of Severe Hypoglycemia (Panel B) in the Patients Receiving Intensive Therapy, According to Their Mean Glycosylated Hemoglobin Values during the Trial.

View larger version (19K):

[\[in this window\]](#)

[\[in a new window\]](#)

Progression of retinopathy was defined as in the legend to Figure 2. In Panel A, the glycosylated hemoglobin values used were the mean of the values obtained every six months. In Panel B, the mean of the monthly values was used. Squares indicate the crude rates within deciles of the mean glycosylated hemoglobin values during the trial; each square corresponds to more than 400 patient-years. The solid lines are regression lines estimated as a function of the log of the mean glycosylated hemoglobin value in Panel A and the log of the glycosylated hemoglobin value in Panel B; the dashed lines are 95 percent confidence intervals.

On the basis of these results, we recommend that most patients with IDDM be treated with closely monitored intensive regimens, with the goal of maintaining their glycemic status as close to the normal range as safely possible. Because of the risk of hypoglycemia, intensive therapy should be implemented with caution, especially in patients with repeated severe hypoglycemia or unawareness of hypoglycemia. The risk-benefit ratio with intensive therapy may be less favorable in children under 13 years of age and in patients with advanced complications, such as end-stage renal disease or cardiovascular or cerebrovascular disease. Patients with proliferative or severe nonproliferative retinopathy may be at higher risk for accelerated progression of their retinopathy after the start of intensive therapy⁴¹ and should be followed closely by their ophthalmologists. Finally, although we did not study patients with non-insulin-dependent diabetes mellitus (NIDDM), hyperglycemia is associated with the presence or progression of complications

in NIDDM,^{42,43} as it is in IDDM. If the main conclusions of this trial with regard to the benefits of reducing glycemia are extended to patients with NIDDM, careful regard for age, capabilities, and coexisting diseases will be necessary. We therefore advise caution in the use of therapies other than diet that are aimed at achieving euglycemia in patients with NIDDM.

Intensive therapy was successfully carried out in the present trial by an expert team of diabetologists, nurses, dietitians, and behavioral specialists, and the time, effort, and cost required were considerable. Because the resources needed are not widely available, new strategies are needed to adapt methods of intensive treatment for use in the general community at less cost and effort. Meanwhile, the health care system should provide the support necessary to make intensive therapy available to those patients who will benefit.

Supported under cooperative agreements and a research contract with the Division of Diabetes, Endocrinology, and Metabolic Diseases of the National Institute of Diabetes and Digestive and Kidney Diseases and by the National Heart, Lung, and Blood Institute, the National Eye Institute, the National Center for Research Resources, and various corporate sponsors (listed in Diabetes Care 1987;10:1-19).

Source Information

A complete list of the persons and institutions participating in the Diabetes Control and Complications Trial Research Group appears in the Appendix.

Address reprint requests to the DCCT Research Group, Box NDIC/DCCT, Bethesda, MD 20892.

References

1. National Diabetes Data Group. Diabetes in America: diabetes data compiled 1984. Bethesda, Md.: National Institutes of Health, 1985. (NIH publication no. 85-1468.)
2. Deckert T, Poulsen JE, Larsen M. Prognosis of diabetics with diabetes onset before the age of thirty-one. *Diabetologia* 1978;14:363-377. [[CrossRef](#)][[Medline](#)]
3. Engerman R, Bloodworth JM Jr, Nelson S. Relationship of microvascular disease in diabetes to metabolic control. *Diabetes* 1977;26:760-769. [[Abstract](#)]
4. Engerman RL, Kern TS. Progression of incipient diabetic retinopathy during good glycemic control. *Diabetes* 1987;36:808-812. [[Abstract](#)]
5. Cohen AJ, McGill PD, Rossetti RG, Guberski DL, Like AA. Glomerulopathy in spontaneously diabetic rat: impact of glycemic control. *Diabetes* 1987;36:944-951. [[Abstract](#)]
6. Klein R, Klein BE, Moss SE, Davis MD, DeMets DL. The Wisconsin epidemiologic study of diabetic retinopathy. II. Prevalence and risk of diabetic retinopathy when age at diagnosis is less than 30 years. *Arch Ophthalmol* 1984;102:520-526. [[Free Full Text](#)]
7. Klein R, Klein BE, Moss SE, Davis MD, DeMets DL. Glycosylated hemoglobin predicts the incidence and progression of diabetic retinopathy. *JAMA* 1988;260:2864-2871. [[Free Full Text](#)]
8. Chase HP, Jackson WE, Hoops SL, Cockerham RS, Archer PG, O'Brien D. Glucose control and the renal and retinal complications of insulin-dependent diabetes. *JAMA* 1989;261:1155-1160. [[Free Full Text](#)]
9. Kroc Collaborative Study Group. Blood glucose control and the evolution of diabetic retinopathy and albuminuria: a preliminary multicenter trial. *N Engl J Med* 1984;311:365-372. [[Abstract](#)]
10. Lauritzen T, Frost-Larsen K, Larsen H-W, Deckert T. Two-year experience with continuous subcutaneous insulin infusion in relation to retinopathy and neuropathy. *Diabetes* 1985;34:Suppl:74-79. [[Abstract](#)]
11. Brinchmann-Hansen O, Dahl-Jorgensen K, Hanssen KF, Sandvik L. The response of diabetic retinopathy to 41 months of multiple insulin injections, insulin pumps, and conventional insulin therapy. *Arch Ophthalmol* 1988;106:1242-1246. [[Free Full Text](#)]
12. Reichard P, Nilsson B-Y, Rosenqvist U. The effect of long-term intensified insulin treatment on the development of microvascular complications of diabetes mellitus. *N Engl J Med* 1993;329:304-309. [[Free Full Text](#)]
13. DCCT Research Group. The Diabetes Control and Complications Trial (DCCT): design and methodologic considerations for the feasibility phase. *Diabetes* 1986;35:530-545. [[Abstract](#)]
14. DCCT Research Group. Diabetes Control and Complications Trial (DCCT): results of feasibility study. *Diabetes Care* 1987;10:1-19. [[Abstract](#)]
15. DCCT Research Group. Diabetes Control and Complications Trial (DCCT): update. *Diabetes Care* 1990;13:427-433. [[Abstract](#)]
16. Siebert C, Clark DM Jr. Operational and policy considerations of data monitoring in clinical trials: the Diabetes Control and Complications Trial experience. *Control Clin Trials* 1993;14:30-44. [[CrossRef](#)][[Medline](#)]
17. DCCT Research Group. Implementation of a multicomponent process to obtain informed consent in the Diabetes Control and Complications Trial. *Control Clin Trials* 1989;10:83-96. [[CrossRef](#)][[Medline](#)]
18. DCCT Research Group. Color photography vs fluorescein angiography in the detection of diabetic retinopathy in the Diabetes Control and Complications Trial. *Arch Ophthalmol* 1987;105:1344-1351. [[Free Full Text](#)]
19. DCCT Research Group. Factors in development of diabetic neuropathy: baseline analysis of neuropathy in feasibility phase of Diabetes Control and Complications Trial (DCCT). *Diabetes* 1988;37:476-481. [[Abstract](#)]

20. Schumer M, Burton G, Burton C, Crum D, Pfeifer MA. Diabetic autonomic neuropathy -- part I: autonomic nervous system data analysis by a computerized central unit in a multicenter trial. *Am J Med* 1988;85:137-143. [[CrossRef](#)][[Medline](#)]
21. DCCT Research Group. Feasibility of centralized measurements of glycated hemoglobin in the Diabetes Control and Complications Trial: a multicenter study. *Clin Chem* 1987;33:2267-2271. [[Free Full Text](#)]
22. DCCT Research Group. A screening algorithm to identify clinically significant changes in neuropsychological function in the Diabetes Control and Complications Trial. *J Clin Exp Neuropsychol* (in press).
23. DCCT Research Group. Reliability and validity of a diabetes quality-of-life measure for the Diabetes Control and Complications Trial (DCCT). *Diabetes Care* 1988;11:725-732. [[Abstract](#)]
24. DCCT Research Group. DCCT protocol. Springfield, Va.: Department of Commerce, National Technical Information Service, 1988. (Publication no. 88-116462-AS.)
25. DCCT Research Group. DCCT manual of operations. Springfield, Va.: Department of Commerce, National Technical Information Service, 1993. (Publication no. 93-183382.)
26. Early Treatment Diabetic Retinopathy Study Research Group. Fundus photographic risk factors for progression of diabetic retinopathy: ETDRS report no. 12. *Ophthalmology* 1991;98:823-833. [[Medline](#)]
27. Wei LJ, Lachin JM. Properties of the urn randomization in clinical trials. *Control Clin Trials* 1988;9:345-364. [[CrossRef](#)][[Medline](#)]
28. Early Treatment Diabetic Retinopathy Study Research Group. Grading diabetic retinopathy from stereoscopic color fundus photographs -- an extension of the modified Airlie House classification: ETDRS report no. 10. *Ophthalmology* 1991;98:786-806. [[Medline](#)]
29. Early Treatment Diabetic Retinopathy Study Research Group. Early photocoagulation for diabetic retinopathy: ETDRS report number 9. *Ophthalmology* 1991;98:Suppl:766-785. [[Medline](#)]
30. Snedecor GW, Cochran WG. *Statistical methods*. 6th ed. Ames: Iowa State University Press, 1967.
31. Kleinbaum DG, Kupper LL, Morgenstern H. *Epidemiologic research: principles and quantitative methods*. Belmont, Calif.: Lifetime Learning, 1982:359.
32. Lee ET. *Statistical methods for survival data analysis*. Belmont, Calif.: Lifetime Learning, 1980:88-92, 127-9, 306-12.
33. Tygstrup N, Lachin JM, Juhl E, eds. *The randomized clinical trial and therapeutic decisions*. New York: Marcel Dekker, 1982:174.
34. McCullagh P, Nelder JA. *Generalized linear models*. 2nd ed. New York: Chapman & Hall, 1989:194-200, 429-30.
35. Dorman JS, Laporte RE, Kuller LH, et al. The Pittsburgh insulin-dependent diabetes mellitus (IDDM) morbidity and mortality study: mortality results. *Diabetes* 1984;33:271-276. [[Abstract](#)]
36. DCCT Research Group. Epidemiology of severe hypoglycemia in the Diabetes Control and Complications Trial. *Am J Med* 1991;90:450-459. [[Medline](#)]
37. DCCT Research Group. Weight gain associated with intensive therapy in the Diabetes Control and Complications Trial. *Diabetes Care* 1988;11:567-573. [[Abstract](#)]
38. Lauritzen T, Frost-Larsen K, Larsen HW, Deckert T. Effect of 1 year of near-normal blood glucose levels on retinopathy in insulin-dependent diabetics. *Lancet* 1983;1:200-204. [[CrossRef](#)][[Medline](#)]
39. Dahl-Jorgensen K, Brinchmann-Hansen O, Hanssen KF, Sandvik L, Aagenaes O. Rapid tightening of blood glucose control leads to transient deterioration of retinopathy in insulin dependent diabetes mellitus: the Oslo study. *BMJ* 1985;290:811-815.
40. Feldt-Rasmussen B, Mathiesen ER, Deckert T. Effect of two years of strict metabolic control on progression of incipient nephropathy in insulin-dependent diabetes. *Lancet* 1986;2:1300-1304. [[CrossRef](#)][[Medline](#)]
41. Lawson PM, Champion MC, Canny C, et al. Continuous subcutaneous insulin infusion (CSII) does not prevent progression of proliferative and preproliferative retinopathy. *Br J Ophthalmol* 1982;66:762-766. [[Free Full Text](#)]
42. Klein R, Klein BE, Moss SE, Davis MD, DeMets DL. The Wisconsin epidemiologic study of diabetic retinopathy. III. Prevalence and risk of diabetic retinopathy when age at diagnosis is 30 or more years. *Arch Ophthalmol* 1984;102:527-532. [[Free Full Text](#)]
43. Nathan DM, Singer DE, Godine JE, Harrington CH, Perlmutter LC. Retinopathy in older type II diabetics: association with glucose control. *Diabetes* 1986;35:797-801. [[Abstract](#)]

Appendix

The following persons and institutions participated in the Diabetes Control and Complications Trial Research Group.

Albert Einstein College of Medicine -- H. Shamoan, H. Duffy, N. Fleischer, S. Engel, P. Saenger, M. Strelzyn, M. Litwak, J. Wylie-Rosett, A. Farkash, D. Geiger, H. Engel, J. Fleischman, D. Pompei, N. Ginsberg, M. Glover, M. Brisman, E. Walker, A. Thomashunis, and J. Gonzalez; Case Western Reserve University -- S. Genuth, E. Brown, W. Dahms, P. Pugsley, L. Mayer, D. Kerr, B. Landau, L. Singerman, T. Rice, M. Novak, S. Smith-Brewer, J. McConnell, D. Drotar, D. Woods, B. Katirgi, M. Litvene, C. Brown, and M. Lusk; Cornell University Medical Center -- R. Campbell, M. Lackaye, M. Richardson, B. Levy, S. Chang, M. Hein-Heinemann, S. Barron, L. Astor, D. LeBeck, D. Brillon, B. Diamond, A. Vasilas-Dwoskin, B. Laurenzi, N. Foldi, M. Rubin, T. Flynn, V. Reppucci, C. Heise, and A. Sanchez; Henry Ford Hospital -- F. Whitehouse, D. Kruger, D. Kahkonen, J. Fachnie, J. Fisk, J. Carey, M. Cox, B. Ahmad, E. Angus, H.

Campbell, D. Fields, M. Croswell, K. Basha, P. Chung, A. Schoenherr, M. Mobley, K. Marchiori, J. Francis, and J. Kelly; International Diabetes Center -- D. Etzwiler, P. Callahan, P. Hollander, G. Castle, R. Bergenstal, M. Spencer, J. Nelson, L. Bezceny, C. Roethke, M. Orban, C. Ulrich, L. Gill, K. Morgan, J. Laechelt, F. Taylor, D. Freking, A. Towey, M. Lieppman, S. Rakes, J. Mangum, N. Cooper, and P. Upham; Joslin Diabetes Center -- A. Jacobson, S. Crowell, J. Wolfsdorf, R. Beaser, O. Ganda, J. Rosenzweig, C. Stewart, B. Halford, E. Friedlander, D. Tarsy, P. Arrigg, G. Sharuk, S. Shah, G. Wu, J. Cevallerano, R. Poole, P. Silver, R. Cavicchi, D. Fleming, J. Marcus, C. Griffiths, and N. Cappella; Massachusetts General Hospital -- D. Nathan, M. Larkin, J. Godine, J. Lynch, D. Norman, C. McKittrick, C. Haggan, L. Delahanty, E. Anderson, P. Lou, C. Taylor, D. Cros, K. Folino, S. Brink, K. Abbott, and K. Sicotte; Mayo Foundation -- F. J. Service, A. Schmidt, R. Rizza, B. Zimmerman, W. Schwenk, J. Mortenson, G. Ziegler, A. Lucas, N. Hanson, S. Sellnow, J. Pach, D. Stein, B. Eickhoff, R. Woodwick, R. Tackmann, J. Trautmann, J. Rostvold, T. Link, P. Dyck, J. Daube, R. Colligan, A. Windebank, and J. King; Medical University of South Carolina -- J. Colwell, D. Wood, R. Mayfield, J. Pickett, M. Chitwood, D. Billings, Y. Dabney, J. Buse, L. King, S. Vale, T. Thompson, B. Bohm, T. Lyons, K. Hermayer, and A. Rice; Northwestern University -- M. Molitch, B. Schaefer, C. Johnson, J. Lyons, B. Metzger, B. Cohen, T. Nishida, K. Parke, V. Yusim, M. Moore, L. Jampol, K. Dineen, J. Stahl, L. Richine, D. Weinberg, I. Loose, and M. Kushner; University of British Columbia -- A. Morrison, A. Jalbert, H. Tildesley, S. Leung, I. Begg, D. Johnson, S. Lalani, T. Kennedy, and G. Meadows; University of California, San Diego -- O. Kolterman, G. Lorenzi, K. Jones, M. Goldbaum, M. Swenson, R. Lyon, M. Giotta, K. Kadlec, R. Reed, L. Kirsch, J. Goodman, S. Cahill, T. Clark, R. Abram, L. Sayner, R. Ochabski, R. Gloria, G. Birchler, J. Grant, B. Grasse, L. Christle, B. Abreu, I. Grant, and R. Heaton; University of Iowa -- R. Zeitler, W. Sivitz, M. Bayless, H. Schrott, N. Olson, B. Tindal, L. Snetselaar, D. Mueller, A. Dudler, J. Swartzendruber, R. Hoffman, J. MacIndoe, J. Kramer, T. Weingeist, A. Kimura, E. Stone, T. Grout, C. Fountain, S. Karakas, C. Vogel, P. Montague, D. Keyser, S. Mennen, C. Doggett, G. Rose, K. Devet, and P. Muhle; University of Maryland School of Medicine -- A. Kowarski, D. Ostrowski, P. Levin, S. Chalew, J. Hylton, D. Young-Hyman, M. Barlow, R. Mayer, M. Elman, V. Lakhanpal, B. Weiner, M. Millar, S. Blum, W. Buie, and B. Mace; University of Michigan -- D. Greene, C. Martin, J. Floyd, F. Dunn, D. Henry, S. Bennett, A. Lasichak, A. Vine, J. Albers, T. Sandford, J. Loftin, M. Stevens, S. Elner, C. Martonyi, F. McIver, S. Stanley, J. Willis, K. Ryan, T. Spiegelberg, S. Nalepa, B. Glasgow, E. Chan, and P. Dotimas; University of Minnesota -- J. Bantle, M. Mech, M. Balles, W. Kennedy, M. Khan, W. Knobloch, C. Kwong, L. McKenzie, J. Olson, R. Ramsay, W. Robiner, R. Warhol, A. Genia, G. McDonough, B. McMichael, D. Philip, L. Ponwith, R. Sahinen, E. Stinson, J. Verness, L. Fimreite, and J. Stein; University of Missouri -- D. Goldstein, M. Hall, T. Burns, D. Klachko, J. Giangiacomo, S. Rawlings, L. Aston, J. England, H. Wiedmeyer, M. Daugherty, M. Lightfoot, R. Wilson, R. Wilson, G. Griffing, D. Gardner, R. Conway, K. Blinder, M. Brownlee-Duffeck, N. Palmer, and L. Gash; University of New Mexico School of Medicine -- D. Schade, C. Johannes, R. Reidy, J. Bicknell, A. Vogel, D. Drumm, P. Boyle, M. Burge, N. Jones, J. Canady, and D. Nickell; University of Pennsylvania-Children's Hospital of Pennsylvania -- L. Baker, P. Ilves-Corressel, S. Schwartz, S. Braunstein, J. McBride, A. Brucker, L. Rendle, M. Brown, J. Sladky, B. Maschak-Carey, D. Lawley, W. Nyberg, L. Weeney, E. Sandburg, S. Byrd, E. Aguado, N. Mulholland, D. Cahn, M. Suscavage, J. Egler, M. Vaughn-Norton, C. Collins, and H. Mameniskis; University of Pittsburgh -- A. Drash, J. Wesche, M. Bratkowski, D. Becker, S. Arslanian, B. Doft, L. Lobes, J. Rinkoff, J. Warnick, D. Curtin, D. Steinberg, G. Vagstad, C. Ryan, F. Harris, L. Steranchak, J. Arch, K. Kelly, P. Ostroska, M. Guiliani, M. Good, T. Williams, K. Olsen, A. Campbell, C. Shipe, R. Conwit, D. Finegold, and M. Zauha; University of South Florida -- J. Malone, N. Grove, D. McMillan, L. Babione, T. DeClue, P. Pavan, J. Korthals, H. Solc, and A. Mangione; University of Tennessee -- A. Kitabchi, L. Taylor, L. Jones, K. Pitts, T. Bertorini, J. Bittle, G. Burghen, J. Fisher, T. Hughes, J. Linn, D. Meyer, W. Murphy, M. Justice, A. Sherman, L. Wright, and L. Murphy; University of Texas Southwestern Medical Center -- P. Raskin, S. Strowig, M. Basco, S. Cercone, L. Ramirez, R. Anand, C. Wilson, R. Greenlee, W. Anderson, E. Mendelson, P. Vanacek, J. Howard, C. Ousley, B. Yates, D. Conger, B. Maguire, M. Biggs, B. Newton, and K. Sherill; University of Toronto -- B. Zinman, A. Barnie, R. Ehrlich, D. Daneman, K. Perlman, L. Leiter, I. Gottesman, R. Devenyi, C. Mortimer, K. Moffat, A. Gordon, R. Ferguson, K. Camelon, S. Simkins, C. Littlefield, G. Rodin, K. Hartley, J. Kwan, D. Gnanapandithen, S. Rogers, L. Haye, J. Rose, S. Mezei, B. Bunphy, S. Maclean, L. MacKeen, M. Mandelcorn, P. Nellis, L. Ruttan, and D. Wilson-Smith; University of Washington -- J. Palmer, J. Ginsberg, I. Hirsch, J. Kinyoun, H. Doerr, R. Mauseth, K. Sweeney, L. Van Ottingham, L. Thomson, C. Greenbaum, L. Sameshima, R. Farkas-Hirsch, G. Rosenbaum, N. Rubner, T. Brown, G. Kraft, J. Broeckel, M. Karlsen, D. Khakpour, M. Ramirez, B. Smit, and L. Mix; University of Western Ontario -- J. Dupre, P. Colby, W. Rodger, I. Hramiak, M. Jenner, C. Canny, W. Brown, T. Smith, J. Harth, S. Bondy, S. Beath, S. McCabe, C. Gouchie, K. Blanchard, J. McCallum, S. Jung, and A. Sue-Tang; Vanderbilt University -- R. Lorenz, J. Lipps, J. McRae, J. May, M. May, P. Campbell, S. Feman, A. Kilroy, C. Pulliam, D. Schlundt, K. Jannasch, D. Davis, N. Cullen, T. Adkins, M. Snell, K. Virts, and L. Quesenberry; Washington University, St. Louis --

J. Santiago, L. Levandoski, N. White, J. McGill, J. Bubb, L. Schmidt, Y. Strasberg, M. Casso, M. Noetzel, R. Olk, I. Boniuk, M. Grand, M. Thomas, D. Williams, G. Nobel, R. Kacizak, E. Ort, J. Dahl, L. Breeding, G. Hoffmeyer, P. Bilyeu, J. Blank, C. Walters, J. Bodnar, P. Rodriguez, M. Erickson, and S. Hedrick; Yale University School of Medicine -- W. Tamborlane, J. Ahern, R. Sherwin, P. Gatcomb, K. Stoessel, N. Held, J. Ebersole, I. Scanlon, R. Louard, C. Wildstein, D. Bilodeau, K. Fong, D. Ottaviano, and C. Larson.

Office of the Chairman -- O. B. Crofford; Data Coordinating Center -- J. Lachin, P. Cleary, D. Thompson, D. Kenny, S. Lan, G. Lan, A. Brenneman, W. Owen, K. Adams, D. Arnold, R. Campanell, N. Loring, P. Scheirer, D. Becker, D. Lamas, C. Dunegan, H. Veeramachaneni, C. Williams, and S. Abdul-Baaqiy; Consultants -- A. Kassoff, K. Adams, I. Grant, R. Heaton, J. Dorman, R. Spielman, and R. Klein; National Institute of Diabetes and Digestive and Kidney Diseases Program Office -- C. Siebert and R. Silverman; Central Units: Central Autonomic Coding Unit (Southern Illinois University) -- M. Pfeifer, M. Schumer, M. Moran, and J. Farquhar; Central Backup HbA_{1c} Laboratory (University of Missouri) -- J. England, H. Wiedmeyer, and C. Rohlfing; Central Fundus Photograph Reading Center (University of Wisconsin) -- M. Davis, L. Hubbard, Y. Magli, S. Thomas, J. Onofrey, K. Jensen, R. Brothers, S. Ansay, J. Armstrong, D. Badal, M. Vanderhoof-Young, B. Esser, P. Geithman, D. Hurlburt, J. Reimers, K. Kewley, and K. Miner; Central Biochemistry Laboratory (University of Minnesota) -- M. Steffes and J. Bucks; Central Neurobehavioral Coding Unit (Western Psychiatric Institute and Clinic) -- C. Ryan, R. Catanzaro, A. Lukes, G. Bagovich, and T. Woodfill; Central ECG Reading Unit (University of Minnesota) -- R. Crow, J. Hughlett, and C. Swanson; Central Nutrition Coding Unit (University of Minnesota) -- I. Buzzard, M. Stevens, B. Sielaff, B. Pickering, and S. Schakel; Economic Evaluation Unit -- W. Herman (chairman), E. Dasbach, T. Songer, and G. Janes; Mortality and Morbidity Committee: L. Deeb, R. Ewart, and T. Orchard; Data, Safety, and Quality Review Group: C. Clark (chairman), G. Cutter, M. Davis, D. DeMets, F. Ferris, C. Furberg, E. Horton, J. Keen, D. Lockwood, P. Palmberg, B. Rourke, and A. Tsiatis; Policy Advisory Group: R. Levy (chairman), R. Frank, J. Grizzle, A. Rubenstein, J. Schneider, and J. Skyler; Writing Team: D.M. Nathan (chairman), S. Genuth, J. Lachin, P. Cleary, O. Crofford, M. Davis, L. Rand, and C. Siebert.

Related Letters:

Causes of Death in Injection-Drug Users

Woody G. E., Metzger D. S.

[Extract](#) | [Full Text](#)

N Engl J Med 1993; 329:1661, Nov 25, 1993. **Correspondence**

Inadvertent Placement of an Advertisement

Merkel P. A., Kassirer J. P.

[Extract](#) | [Full Text](#)

N Engl J Med 1993; 329:1661-1662, Nov 25, 1993. **Correspondence**

The Effect of Intensive Treatment of Diabetes Mellitus

Townsend R. R., Kapoor S. C., Garber A., Gerard D., Nathan D. M., Crofford O. B., Lachin J. M.

[Extract](#) | [Full Text](#)

N Engl J Med 1994; 330:641-642, Mar 3, 1994. **Correspondence**

THIS ARTICLE

▶ [Abstract](#)

COMMENTARY

▶ [Letters](#)

▶ [Letters](#)

▶ [Letters](#)

TOOLS & SERVICES

▶ [Add to Personal Archive](#)

▶ [Add to Citation Manager](#)

▶ [Notify a Friend](#)

▶ [E-mail When Cited](#)

MORE INFORMATION

▶ [PubMed Citation](#)

This article has been cited by other articles:

- Goumenos, D. S., Kawar, B., El Nahas, M., Conti, S., Wagner, B., Spyropoulos, C., Vlachojannis, J. G., Benigni, A., Kalfarentzos, F. (2009). Early histological changes in the kidney of people with morbid obesity. *Nephrol Dial Transplant* 24: 3732-3738 [[Abstract](#)] [[Full Text](#)]
- KENNEDY, L. (2009). Incretin-based therapies for type 2 diabetes mellitus: New therapeutic mechanisms. *Cleveland Clinic Journal of Medicine* 76: S2-S3 [[Full Text](#)]
- Wong, T. Y., Mwamburi, M., Klein, R., Larsen, M., Flynn, H., Hernandez-Medina, M., Ranganathan, G., Wirosko, B., Pleil, A., Mitchell, P. (2009). Rates of Progression in Diabetic Retinopathy During Different Time Periods: A systematic review and meta-analysis. *Diabetes Care* 32: 2307-2313 [[Abstract](#)] [[Full Text](#)]
- Raccach, D., Sulmont, V., Reznik, Y., Guerci, B., Renard, E., Hanaire, H., Jeandidier, N., Nicolino, M. (2009). Incremental Value of Continuous Glucose Monitoring When Starting Pump Therapy in Patients With Poorly Controlled Type 1 Diabetes: The RealTrend study. *Diabetes Care* 32: 2245-2250 [[Abstract](#)] [[Full Text](#)]
- Hood, K. K., Peterson, C. M., Rohan, J. M., Drotar, D. (2009). Association Between Adherence and Glycemic Control in Pediatric Type 1 Diabetes: A Meta-analysis. *Pediatrics* 124: e1171-e1179 [[Abstract](#)] [[Full Text](#)]
- Nakhla, M., Daneman, D., To, T., Paradis, G., Guttman, A. (2009). Transition to Adult Care for Youths With Diabetes Mellitus: Findings From a Universal Health Care System. *Pediatrics* 124: e1134-e1141 [[Abstract](#)] [[Full Text](#)]

- Pescovitz, M. D., Greenbaum, C. J., Krause-Steinrauf, H., Becker, D. J., Gitelman, S. E., Goland, R., Gottlieb, P. A., Marks, J. B., McGee, P. F., Moran, A. M., Raskin, P., Rodriguez, H., Schatz, D. A., Wherrett, D., Wilson, D. M., Lachin, J. M., Skyler, J. S., the Type 1 Diabetes TrialNet Anti-CD20 Study Group, (2009). Rituximab, B-Lymphocyte Depletion, and Preservation of Beta-Cell Function. *NEJM* 361: 2143-2152 [\[Abstract\]](#) [\[Full Text\]](#)
- Castro-Sanchez, A. M., Moreno-Lorenzo, C., Mataran-Penarrocha, G. A., Feriche-Fernandez-Castans, B., Granados-Gamez, G., Quesada-Rubio, J. M. (2009). Connective Tissue Reflex Massage for Type 2 Diabetic Patients with Peripheral Arterial Disease: Randomized Controlled Trial. *Evid Based Complement Alternat Med* 0: nep171v1-nep171 [\[Abstract\]](#) [\[Full Text\]](#)
- American Association of Diabetes Educators, (2009). Diabetic Kidney Disease. *The Diabetes Educator* 35: 53S-56S [\[Full Text\]](#)
- Shane-McWhorter, L., Armor, B., Johnson, J. T., Letassy, N., Reichert, S. L., Sisson, E. M., Hanson, J. B. S., Triplett, C., Vivian, E. M. (2009). Pharmacist Scope of Practice, Standards of Practice, and Standards of Professional Performance for Diabetes Educators. *The Diabetes Educator* 35: 69S-84S [\[Full Text\]](#)
- American Association of Diabetes Educators, (2009). AADE Guidelines for the Practice of Diabetes Self-Management Education and Training (DSME/T). *The Diabetes Educator* 35: 85S-107S [\[Full Text\]](#)
- Katon, W., Russo, J., Lin, E. H. B., Heckbert, S. R., Karter, A. J., Williams, L. H., Ciechanowski, P., Ludman, E., Von Korff, M. (2009). Diabetes and Poor Disease Control: Is Comorbid Depression Associated With Poor Medication Adherence or Lack of Treatment Intensification?. *Psychosom. Med.* 71: 965-972 [\[Abstract\]](#) [\[Full Text\]](#)
- The Juvenile Diabetes Research Foundation Continuo, (2009). Sustained Benefit of Continuous Glucose Monitoring on A1C, Glucose Profiles, and Hypoglycemia in Adults With Type 1 Diabetes. *Diabetes Care* 32: 2047-2049 [\[Abstract\]](#) [\[Full Text\]](#)
- Waden, J., Forsblom, C., Thorn, L. M., Gordin, D., Saraheimo, M., Groop, P.-H., on behalf of the Finnish Diabetic Nephropathy Stud, (2009). A1C Variability Predicts Incident Cardiovascular Events, Microalbuminuria, and Overt Diabetic Nephropathy in Patients With Type 1 Diabetes. *Diabetes* 58: 2649-2655 [\[Abstract\]](#) [\[Full Text\]](#)
- McGuire, J. F., Rouen, S., Siegfried, E., Wright, D. E., Dobrowsky, R. T. (2009). Caveolin-1 and Altered Neuregulin Signaling Contribute to the Pathophysiological Progression of Diabetic Peripheral Neuropathy. *Diabetes* 58: 2677-2686 [\[Abstract\]](#) [\[Full Text\]](#)
- Monnier, L., Colette, C. (2009). Target for Glycemic Control: Concentrating on glucose. *Diabetes Care* 32: S199-S204 [\[Full Text\]](#)
- Boutati, E. I., Raptis, S. A. (2009). Self-Monitoring of Blood Glucose as Part of the Integral Care of Type 2 Diabetes. *Diabetes Care* 32: S205-S210 [\[Abstract\]](#) [\[Full Text\]](#)
- de Leiva, A., Hernandez, M. E., on behalf of EDUAB-HSP and GBT-UPM, (2009). Telemedical Artificial Pancreas: PARIS (Pancreas Artificial Telemedico Inteligente) research project. *Diabetes Care* 32: S211-S216 [\[Full Text\]](#)
- Del Prato, S., Penno, G., Miccoli, R. (2009). Changing the Treatment Paradigm for Type 2 Diabetes. *Diabetes Care* 32: S217-S222 [\[Full Text\]](#)
- Meneghini, L. F. (2009). Early Insulin Treatment in Type 2 Diabetes: What are the pros?. *Diabetes Care* 32: S266-S269 [\[Full Text\]](#)
- Chiasson, J.-L. (2009). Early Insulin Use in Type 2 Diabetes: What are the cons?. *Diabetes Care* 32: S270-S274 [\[Full Text\]](#)
- Gallwitz, B. (2009). Implications of Postprandial Glucose and Weight Control in People With Type 2 Diabetes: Understanding and implementing the International Diabetes Federation guidelines. *Diabetes Care* 32: S322-S325 [\[Full Text\]](#)
- Davidson, J. A., Parkin, C. G. (2009). Is Hyperglycemia a Causal Factor in Cardiovascular Disease?: Does proving this relationship really matter? Yes. *Diabetes Care* 32: S331-S333 [\[Full Text\]](#)
- Conget, I., Gimenez, M. (2009). Glucose Control and Cardiovascular Disease: Is it important? No. *Diabetes Care* 32: S334-S336 [\[Full Text\]](#)
- Bianchi, C., Miccoli, R., Daniele, G., Penno, G., Del Prato, S. (2009). Is There Evidence That Oral Hypoglycemic Agents Reduce Cardiovascular Morbidity/Mortality? Yes. *Diabetes Care* 32: S342-S348 [\[Full Text\]](#)
- Nordquist, L., Brown, R., Fasching, A., Persson, P., Palm, F. (2009). Proinsulin C-peptide reduces diabetes-induced glomerular hyperfiltration via efferent arteriole dilation and inhibition of tubular sodium reabsorption. *Am. J. Physiol. Renal Physiol.* 297: F1265-F1272 [\[Abstract\]](#) [\[Full Text\]](#)
- Conway, B., Costacou, T., Orchard, T. (2009). Is glycaemia or insulin dose the stronger risk factor for coronary artery disease in type 1 diabetes?. *Diabetes and Vascular Disease Research* 6: 223-230 [\[Abstract\]](#)
- Stading, J., Herrmann, J., Walters, R., Destache, C., Chock, A. (2009). Impact of Pharmacist Intervention on Diabetes Patients in an Ambulatory Setting. *Diabetes Spectr.* 22: 241-246 [\[Full Text\]](#)
- Goh, H K, Chew, D E K, Miranda, I G, Tan, L, Lim, G H (2009). 24-Hour observational ward management of diabetic patients presenting with hypoglycaemia: a prospective observational study. *Emerg. Med. J.* 26: 719-723 [\[Abstract\]](#) [\[Full Text\]](#)
- Lewin, A. B., LaGreca, A. M., Geffken, G. R., Williams, L. B., Duke, D. C., Storch, E. A., Silverstein, J. H. (2009). Validity and Reliability of an Adolescent and Parent Rating Scale of Type 1 Diabetes Adherence Behaviors: The Self-Care Inventory (SCI). *J Pediatr Psychol* 34: 999-1007 [\[Abstract\]](#) [\[Full Text\]](#)
- Samuelson, L. L., Gerber, D. A. (2009). Recent Developments in Less Invasive Technology to Monitor Blood Glucose Levels in Patients with Diabetes. *Lab Med* 40: 607-610 [\[Abstract\]](#) [\[Full Text\]](#)

- Ly, T. T., Gallego, P. H., Davis, E. A., Jones, T. W. (2009). Impaired Awareness of Hypoglycemia in a Population-Based Sample of Children and Adolescents With Type 1 Diabetes. *Diabetes Care* 32: 1802-1806 [\[Abstract\]](#) [\[Full Text\]](#)
- Lingvay, I., Legendre, J. L., Kaloyanova, P. F., Zhang, S., Adams-Huet, B., Raskin, P. (2009). Insulin-Based Versus Triple Oral Therapy for Newly Diagnosed Type 2 Diabetes: Which is better?. *Diabetes Care* 32: 1789-1795 [\[Abstract\]](#) [\[Full Text\]](#)
- Jaleel, A., Klaus, K. A., Morse, D. M., Karakelides, H., Ward, L. E., Irving, B. A., Nair, K. S. (2009). Differential effects of insulin deprivation and systemic insulin treatment on plasma protein synthesis in type 1 diabetic people. *Am. J. Physiol. Endocrinol. Metab.* 297: E889-E897 [\[Abstract\]](#) [\[Full Text\]](#)
- Nagaredy, P. R., Soliman, H., Lin, G., Rajput, P. S., Kumar, U., McNeill, J. H., MacLeod, K. M. (2009). Selective Inhibition of Protein Kinase C β 2 Attenuates Inducible Nitric Oxide Synthase-Mediated Cardiovascular Abnormalities in Streptozotocin-Induced Diabetic Rats. *Diabetes* 58: 2355-2364 [\[Abstract\]](#) [\[Full Text\]](#)
- Shiesh, S.-C., Wiedmeyer, H.-M., Kao, J.-T., Vasikaran, S. D., Lopez, J. B., the Laboratory Management Committee for the Asian-. (2009). Proficiency Testing of Hb A1c: A 4-Year Experience in Taiwan and the Asian Pacific Region. *Clin. Chem.* 55: 1876-1880 [\[Abstract\]](#) [\[Full Text\]](#)
- Goldenberg, N. M., Silverman, M. (2009). Rab34 and its effector munc13-2 constitute a new pathway modulating protein secretion in the cellular response to hyperglycemia. *Am. J. Physiol. Cell Physiol.* 297: C1053-C1058 [\[Abstract\]](#) [\[Full Text\]](#)
- Li, Y., Li, Y., Feng, Q., Arnold, M., Peng, T. (2009). Calpain activation contributes to hyperglycaemia-induced apoptosis in cardiomyocytes. *Cardiovasc Res* 84: 100-110 [\[Abstract\]](#) [\[Full Text\]](#)
- Xu, J., Zou, M.-H. (2009). Molecular Insights and Therapeutic Targets for Diabetic Endothelial Dysfunction. *Circulation* 120: 1266-1286 [\[Full Text\]](#)
- Garcia-Alcala, H., Ruiz-Arguelles, A., Cedillo-Carvalho, B. (2009). Effect of the Method to Measure Levels of Glycated Hemoglobin on Individual Clinical Decisions: Comparison of an Immunoassay With High-Performance Liquid Chromatography. *Am J Clin Pathol* 132: 332-335 [\[Abstract\]](#) [\[Full Text\]](#)
- Van den Berghe, G., Schetz, M., Vlasselaers, D., Hermans, G., Wilmer, A., Bouillon, R., Mesotten, D. (2009). Intensive Insulin Therapy in Critically Ill Patients: NICE-SUGAR or Leuven Blood Glucose Target?. *J. Clin. Endocrinol. Metab.* 94: 3163-3170 [\[Abstract\]](#) [\[Full Text\]](#)
- Chillaron, J. J., Goday, A., Flores-Le-Roux, J. A., Benaiges, D., Carrera, M. J., Puig, J., Cano-Perez, J. F., Pedro-Botet, J. (2009). Estimated Glucose Disposal Rate in Assessment of the Metabolic Syndrome and Microvascular Complications in Patients with Type 1 Diabetes. *J. Clin. Endocrinol. Metab.* 94: 3530-3534 [\[Abstract\]](#) [\[Full Text\]](#)
- Yeo, C.-P., Tan, C. H.-C., Jacob, E. (2009). Haemoglobin A1c: evaluation of a new HbA1c point-of-care analyser Bio-Rad in2it in comparison with the DCA 2000 and central laboratory analysers. *Ann Clin Biochem* 46: 373-376 [\[Abstract\]](#) [\[Full Text\]](#)
- Woodward, A., Weston, P., Casson, I.F., Gill, G.V. (2009). Nocturnal hypoglycaemia in type 1 diabetes--frequency and predictive factors. *QJM* 102: 603-607 [\[Abstract\]](#) [\[Full Text\]](#)
- Bando, Y., Kanehara, H., Toya, D., Tanaka, N., Kasayama, S., Koga, M. (2009). Association of serum glycated albumin to haemoglobin A1C ratio with hepatic function tests in patients with chronic liver disease. *Ann Clin Biochem* 46: 368-372 [\[Abstract\]](#) [\[Full Text\]](#)
- Bao, S., Briscoe, V. J., Tate, D. B., Davis, S. N. (2009). Effects of Differing Antecedent Increases of Plasma Cortisol on Counterregulatory Responses During Subsequent Exercise in Type 1 Diabetes. *Diabetes* 58: 2100-2108 [\[Abstract\]](#) [\[Full Text\]](#)
- Askwith, T., Zeng, W., Eggo, M. C., Stevens, M. J. (2009). Oxidative stress and dysregulation of the taurine transporter in high-glucose-exposed human Schwann cells: implications for pathogenesis of diabetic neuropathy. *Am. J. Physiol. Endocrinol. Metab.* 297: E620-E628 [\[Abstract\]](#) [\[Full Text\]](#)
- Huang, E. S., Basu, A., O'Grady, M. J., Capretta, J. C. (2009). Using Clinical Information To Project Federal Health Care Spending. *Health Aff (Millwood)* 28: w978-w990 [\[Abstract\]](#) [\[Full Text\]](#)
- Estrada, C. L., Danielson, K. K., Drum, M. L., Lipton, R. B. (2009). Hospitalization Subsequent to Diagnosis in Young Patients With Diabetes in Chicago, Illinois. *Pediatrics* 124: 926-934 [\[Abstract\]](#) [\[Full Text\]](#)
- Dhar, G. C. (2009). Intensive glycemic control: Implications of the ACCORD, ADVANCE, and VADT trials for family physicians. *cfp* 55: 803-804 [\[Full Text\]](#)
- Simo, R., Hernandez, C. (2009). Advances in the Medical Treatment of Diabetic Retinopathy. *Diabetes Care* 32: 1556-1562 [\[Full Text\]](#)
- Mineo, D., Pileggi, A., Alejandro, R., Ricordi, C. (2009). Point: Steady Progress and Current Challenges in Clinical Islet Transplantation. *Diabetes Care* 32: 1563-1569 [\[Full Text\]](#)
- Khan, M. H., Harlan, D. M. (2009). Counterpoint: Clinical Islet Transplantation: Not Ready for Prime Time. *Diabetes Care* 32: 1570-1574 [\[Full Text\]](#)
- Ceriello, A., Esposito, K., Ihnat, M., Thorpe, J., Giugliano, D. (2009). Long-Term Glycemic Control Influences the Long-Lasting Effect of Hyperglycemia on Endothelial Function in Type 1 Diabetes. *J. Clin. Endocrinol. Metab.* 94: 2751-2756 [\[Abstract\]](#) [\[Full Text\]](#)
- Juvenile Diabetes Research Foundation Continuous G. (2009). The Effect of Continuous Glucose Monitoring in Well-Controlled Type 1 Diabetes. *Diabetes Care* 32: 1378-1383 [\[Abstract\]](#) [\[Full Text\]](#)
- Wright, R. J., Frier, B. M., Deary, I. J. (2009). Effects of Acute Insulin-Induced Hypoglycemia on Spatial Abilities in Adults With Type 1 Diabetes. *Diabetes Care* 32: 1503-1506 [\[Abstract\]](#) [\[Full Text\]](#)
- Spinks, J J, Haest, J, Ross, K, London, R, Edge, J A (2009). Paediatric Diabetes Services--evidence that expanding the workforce allows intensification of insulin regimens and improves glycaemic control. *Arch. Dis. Child.* 94: 646-647 [\[Full Text\]](#)

- Diabetes Control and Complications Trial/Epidemiol, (2009). Modern-Day Clinical Course of Type 1 Diabetes Mellitus After 30 Years' Duration: The Diabetes Control and Complications Trial/Epidemiology of Diabetes Interventions and Complications and Pittsburgh Epidemiology of Diabetes Complications Experience (1983-2005). *Arch Intern Med* 169: 1307-1316 [\[Abstract\]](#) [\[Full Text\]](#)
- Bilous, R., Chaturvedi, N., Sjolje, A. K., Fuller, J., Klein, R., Orchard, T., Porta, M., Parving, H.-H. (2009). Effect of Candesartan on Microalbuminuria and Albumin Excretion Rate in Diabetes: Three Randomized Trials. *ANN INTERN MED* 151: 11-20 [\[Abstract\]](#) [\[Full Text\]](#)
- Perkins, B. A., Aiello, L. P., Krolewski, A. S. (2009). Diabetes Complications and the Renin-Angiotensin System. *NEJM* 361: 83-85 [\[Full Text\]](#)
- Schwartz, K. L., Monsur, J., Hammad, A., Bartoces, M. G., Neale, A. V. (2009). Comparison of Point of Care and Laboratory HbA1c Analysis: A MetroNet Study. *J Am Board Fam Med* 22: 461-463 [\[Abstract\]](#) [\[Full Text\]](#)
- Stylianou, C., Kelnar, C. (2009). The introduction of successful treatment of diabetes mellitus with insulin. *JRSM* 102: 298-303 [\[Full Text\]](#)
- Butler, S. (2009). Update on Insulin. *NASN School Nurse* 24: 160-162 [\[Full Text\]](#)
- Evert, A., Trenc, D., Catton, S., Huynh, P. (2009). Continuous Glucose Monitoring Technology for Personal Use: An Educational Program That Educates and Supports the Patient. *The Diabetes Educator* 35: 565-580 [\[Abstract\]](#) [\[Full Text\]](#)
- Rentfro, A. R., McEwen, M., Ritter, L. (2009). Perspectives for Practice: Translating Estimated Average Glucose (eAG) to Promote Diabetes Self-management Capacity. *The Diabetes Educator* 35: 581-594 [\[Abstract\]](#) [\[Full Text\]](#)
- Brick, J. C., Derr, R. L., Saudek, C. D. (2009). A Randomized Comparison of the Terms Estimated Average Glucose Versus Hemoglobin A1C. *The Diabetes Educator* 35: 596-602 [\[Abstract\]](#) [\[Full Text\]](#)
- Morath, C., Zeier, M. (2009). Transplantation in type 1 diabetes. *Nephrol Dial Transplant* 24: 2026-2029 [\[Full Text\]](#)
- Vanschoonbeek, K., Lansink, M., van Laere, K. M. J., Senden, J. M. G., Verdijk, L. B., van Loon, L. J. C. (2009). Slowly Digestible Carbohydrate Sources Can Be Used to Attenuate the Postprandial Glycemic Response to the Ingestion of Diabetes-Specific Enteral Formulas. *The Diabetes Educator* 35: 631-640 [\[Abstract\]](#) [\[Full Text\]](#)
- Badawi, O., Yeung, S. Y., Rosenfeld, B. A. (2009). Evaluation of Glycemic Control Metrics for Intensive Care Unit Populations. *American Journal of Medical Quality* 24: 310-320 [\[Abstract\]](#)
- O'Kane, M. J., Pickup, J. (2009). Self-monitoring of blood glucose in diabetes: is it worth it?. *Ann Clin Biochem* 46: 273-282 [\[Abstract\]](#) [\[Full Text\]](#)
- Kazempour-Ardebili, S., Lecamwasam, V. L., Dassanyake, T., Frankel, A. H., Tam, F. W.K., Dornhorst, A., Frost, G., Turner, J. J.O. (2009). Assessing Glycemic Control in Maintenance Hemodialysis Patients With Type 2 Diabetes. *Diabetes Care* 32: 1137-1142 [\[Abstract\]](#) [\[Full Text\]](#)
- Wang, J., Imai, K., Engelgau, M. M., Geiss, L. S., Wen, C., Zhang, P. (2009). Secular Trends in Diabetes-Related Preventable Hospitalizations in the United States, 1998-2006. *Diabetes Care* 32: 1213-1217 [\[Abstract\]](#) [\[Full Text\]](#)
- Mastrandrea, L., Yu, J., Behrens, T., Buchlis, J., Albini, C., Fournier, S., Quattrin, T. (2009). Etanercept Treatment in Children With New-Onset Type 1 Diabetes: Pilot randomized, placebo-controlled, double-blind study. *Diabetes Care* 32: 1244-1249 [\[Abstract\]](#) [\[Full Text\]](#)
- Bolli, G. B., Kerr, D., Thomas, R., Torlone, E., Sola-Gazagnes, A., Vitacolonna, E., Selam, J. L., Home, P. D. (2009). Comparison of a Multiple Daily Insulin Injection Regimen (Basal Once-Daily Glargine Plus Mealtime Lispro) and Continuous Subcutaneous Insulin Infusion (Lispro) in Type 1 Diabetes: A randomized open parallel multicenter study. *Diabetes Care* 32: 1170-1176 [\[Abstract\]](#) [\[Full Text\]](#)
- Pop-Busui, R., Low, P. A., Waberski, B. H., Martin, C. L., Albers, J. W., Feldman, E. L., Sommer, C., Cleary, P. A., Lachin, J. M., Herman, W. H., for the DCCT/EDIC Research Group, (2009). Effects of Prior Intensive Insulin Therapy on Cardiac Autonomic Nervous System Function in Type 1 Diabetes Mellitus: The Diabetes Control and Complications Trial/Epidemiology of Diabetes Interventions and Complications Study (DCCT/EDIC). *Circulation* 119: 2886-2893 [\[Abstract\]](#) [\[Full Text\]](#)
- Montori, V. M., Fernandez-Balsells, M. (2009). Glycemic Control in Type 2 Diabetes: Time for an Evidence-Based About-Face?. *ANN INTERN MED* 150: 803-808 [\[Abstract\]](#) [\[Full Text\]](#)
- Clement, M., Bhattacharyya, O., Conway, J. R. (2009). Is tight glycemic control in type 2 diabetes really worthwhile?: YES. *cfp* 55: 580-582 [\[Full Text\]](#)
- Clement, M., Bhattacharyya, O., Conway, J. R. (2009). Vaut-il vraiment la peine d'exercer un strict controle glycémique pour le diabete de type 2?: OUI. *cfp* 55: 584-588 [\[Full Text\]](#)
- Mulvaney, S. A. (2009). Improving Patient Problem Solving to Reduce Barriers to Diabetes Self-Management. *Clin. Diabetes* 27: 99-104 [\[Abstract\]](#) [\[Full Text\]](#)
- Clayton, W. Jr., Jagasia, S. (2009). Case Study: New-Onset Diabetes After Renal Transplantation. *Clin. Diabetes* 27: 123-128 [\[Full Text\]](#)
- Elbelt, U., Hahner, S., Allolio, B. (2009). Altered insulin requirement in patients with type 1 diabetes and primary adrenal insufficiency receiving standard glucocorticoid replacement therapy. *Eur J Endocrinol* 160: 919-924 [\[Abstract\]](#) [\[Full Text\]](#)
- Little, R. R., Rohlfing, C. L. (2009). HbA1c Standardization: Background, Progress and Current Issues. *Lab Med* 40: 368-373 [\[Abstract\]](#) [\[Full Text\]](#)
- Pezzolesi, M. G., Poznik, G. D., Mychaleckyj, J. C., Paterson, A. D., Barati, M. T., Klein, J. B., Ng, D. P.K., Placha, G., Canani, L. H., Bochenki, J., Waggott, D., Merchant, M. L., Krolewski, B., Mirea, L., Wanic, K., Katavetin, P., Kure, M., Wolkow, P., Dunn, J. S., Smiles, A., Walker, W. H.,

- Boright, A. P., Bull, S. B., the DCCT/EDIC Research Group, , Doria, A., Rogus, J. J., Rich, S. S., Warram, J. H., Krolewski, A. S. (2009). Genome-Wide Association Scan for Diabetic Nephropathy Susceptibility Genes in Type 1 Diabetes. *Diabetes* 58: 1403-1410 [[Abstract](#)] [[Full Text](#)]
- Jiang, L., Herzog, R. I., Mason, G. F., de Graaf, R. A., Rothman, D. L., Sherwin, R. S., Behar, K. L. (2009). Recurrent Antecedent Hypoglycemia Alters Neuronal Oxidative Metabolism In Vivo. *Diabetes* 58: 1266-1274 [[Abstract](#)] [[Full Text](#)]
 - Faul, J. L., Wilson, S. R., Chu, J. W., Canfield, J., Kuschner, W. G. (2009). The Effect of an Inhaled Corticosteroid on Glucose Control in Type 2 Diabetes. *Clin Med Res* 7: 14-20 [[Abstract](#)] [[Full Text](#)]
 - Enzlin, P., Rosen, R., Wiegel, M., Brown, J., Wessells, H., Gatcomb, P., Rutledge, B., Chan, K.-L., Cleary, P. A., the DCCT/EDIC Research Group. (2009). Sexual Dysfunction in Women With Type 1 Diabetes: Long-term findings from the DCCT/ EDIC study cohort. *Diabetes Care* 32: 780-785 [[Abstract](#)] [[Full Text](#)]
 - Gellar, L., Rovner, A. J., Nansel, T. R. (2009). Whole Grain and Legume Acceptability Among Youths With Type 1 Diabetes. *The Diabetes Educator* 35: 422-427 [[Abstract](#)] [[Full Text](#)]
 - Luyckx, K., Seiffge-Krenke, I. (2009). Continuity and Change in Glycemic Control Trajectories From Adolescence to Emerging Adulthood: Relationships with family climate and self-concept in type 1 diabetes. *Diabetes Care* 32: 797-801 [[Abstract](#)] [[Full Text](#)]
 - Weiss, A. S., Smits, G., Wiseman, A. C. (2009). Twelve-Month Pancreas Graft Function Significantly Influences Survival Following Simultaneous Pancreas-Kidney Transplantation. *CJASN* 4: 988-995 [[Abstract](#)] [[Full Text](#)]
 - Page, K. A., Williamson, A., Yu, N., McNay, E. C., Dzuira, J., McCrimmon, R. J., Sherwin, R. S. (2009). Medium-Chain Fatty Acids Improve Cognitive Function in Intensively Treated Type 1 Diabetic Patients and Support In Vitro Synaptic Transmission During Acute Hypoglycemia. *Diabetes* 58: 1237-1244 [[Abstract](#)] [[Full Text](#)]
 - Kahn, S. E. (2009). Glucose Control in Type 2 Diabetes: Still Worthwhile and Worth Pursuing. *JAMA* 301: 1590-1592 [[Full Text](#)]
 - Nathan, D. M. (2009). Progress in Diabetes Research--What's Next. *JAMA* 301: 1599-1601 [[Full Text](#)]
 - Ellsworth, M. L., Ellis, C. G., Goldman, D., Stephenson, A. H., Dietrich, H. H., Sprague, R. S. (2009). Erythrocytes: Oxygen Sensors and Modulators of Vascular Tone. *Physiology* 24: 107-116 [[Abstract](#)] [[Full Text](#)]

HOME | SUBSCRIBE | SEARCH | CURRENT ISSUE | PAST ISSUES | COLLECTIONS | PRIVACY | TERMS OF USE | HELP | beta.nejm.org

Comments and questions? Please [contact us](#).

The New England Journal of Medicine is owned, published, and [copyrighted](#) © 2009 [Massachusetts Medical Society](#). All rights reserved.